

Collaborating with:



CORCOVADO  
WILDERNESS LODGE

# **ADOPT** a **CORAL**

and unlock their secrets



## **ADOPTION HANDBOOK**



Innoceana

# ADOPT A CORAL

AS A THANK YOU FOR YOUR SYMBOLIC ADOPTION, YOU WILL RECEIVE:



LEARN MORE  
about how to  
adopt a coral



	CARETAKER	DEFENDER	GUARDIAN
<b>PRICE</b>	\$55/month	+ \$1000 (one time donation)	+ \$5000 (one time donation)
Name a 3D coral model	●	●	●
Digital Kit	●	●	●
Coral research updates	●	●	●
Coral program MERCH	●	●	●
Support a research expedition	○	●	●
Research expedition updates	○	●	●
Join a research expedition	○	○	●
Dedicated Innoceana guide throughout your visit	○	○	●
Recognition on our Ojochal center's Donor wall	○	○	●
Expedition video and recognition	○	○	●
Merch delivery (US & EU only)	○	○	●



# ADOPT A CORAL

AS A THANK YOU FOR YOUR SYMBOLIC ADOPTION, YOU WILL RECEIVE:

LEARN MORE  
about how to  
adopt a coral



DIGITAL KIT

- Certification
- Coral card



MERCH

	CARETAKER	DEFENDER	GUARDIAN
	\$55/month	+ \$1000 (one time donation)	+ \$5000 (one time donation)
Stickers	●	●	●
Bracelet	●	●	●
Bottle	●	●	●



## 1 - What does it mean to “name a **3D model** of a coral”?

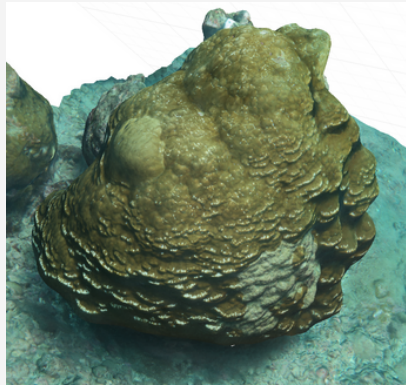
You will have the opportunity to name a coral from our **3D model coral database** (Sketchfab gallery) and receive a **digital coral kit**, which includes a virtual 3D model replica of the coral you've symbolically adopted. You can utilize this 3D model on your social media platforms and share it with your friends. Likewise, you can even view it in augmented or virtual reality! The coral model will contain information such as **species, location, and more**.

With your subscription, you'll be supporting our **coral research project** in **Costa Rica** and become the steward of one of the Costa Rican coral colonies we're studying as part of **our research**.

The digital coral kit also includes a certification, a postcard featuring your coral, and exclusive updates, including insights into the potential secrets of your super coral.

### Digital coral KIT includes

- Digital postcard with details of your coral
- Certification



## 2 - What does “exclusive **updates** of our coral research” mean?



You will receive an exclusive update **every three months** with news on our '**Unlocking the Secrets of the Super Corals Project**'. This update will include (among other things):

- Laboratory updates
- Coral reef health reports
- Summaries of the latest expeditions
- Interviews with our research team
- New discoveries



### 3 - What does “exclusive **MERCH**” means?

**Exclusive MERCH** includes (varies depending on tier):

- Digital coral KIT
- Innoceana bottles
- Bracelets
- Stickers



Innoceana **stickers**



Innoceana coral **bracelet**



Innoceana **Bottle**

#### Tiers: *Defender & Guardian*

### 4 - What does “**support** an Innoceana research expedition” mean?



With this tier, you will support **one day of our research work in the Eastern Tropical Pacific.**

Our research begins at the **Innoceana Ojochal Center** and spans the entire day, starting from early morning (5 am) until dusk (6 pm).

The research expedition involves venturing into the Pacific Ocean, **monitoring the coral reef**, collecting samples of **water quality**, gathering coral samples for **immunology** studies, conducting surveys, including **3D modelling**, and engaging in other conservation activities.

During the expedition day, we patrol the **Marine Corridor of Osa**. Occasionally, we also conduct wildlife rescues, primarily of birds, sea turtles, and cetaceans, trapped in debris. Additionally, we collect litter found along the way.

Once back at our facilities in Ojochal, the research team processes all the **collected data** and transports the **samples** to our laboratory for testing.

Your contribution here is **ESSENTIAL** for **coral conservation**.



## Tiers: Defender & Guardian

### 5 - What does “**exclusive updates** of a research expedition” mean?

After **supporting** a research expedition day, our research team will compile an **expedition report**, which you will receive by email **one month** after the expedition occurs.

The **research report** will include (among other details):

- Activities conducted
- Team members involved
- Collected data (water quality, surveys, reef health, etc.)
- Duration of the expedition
- Photographs and videos of the corals
- Any noteworthy occurrences
- Acknowledgment for your support



## Tiers: ONLY Guardian

### 6 - What does “to **participate** in a research expedition” mean?

By participating in the 'Guardian' tier, you will have the incredible opportunity **to join** the Innoceana research team at our **Marine Conservation Center in Ojochal**. You can bring **one person** with you, and our team will assign a staff member to accompany you during our research expedition day.

This unforgettable **experience** will be supported by your contribution to **our mission** of rewilding the ocean and preventing coral extinction.

After your donation, our research team will **contact you** to invite you to one of our expeditions.



Tiers: **ONLY Guardian**

## 7 - What does “**video summary** of the expedition and mention” mean?

At the expedition, we will **capture** videos and photos of the research team and **supporters working together**.

Around one month after the expedition, our **storytelling team** will compile these visuals into a video, which will be shared with the supporter and on **our social media platforms**. We will tag and acknowledge the supporter in the video, but only if the supporter agrees to it.

*If the supporter is unable to join the expedition day, we will create a video of the expedition with the Innoceana team.*

## 8 - What is the “**recognition on our Donor Wall**”?

At our conservation center in Ojochal, Innoceana has a **DONOR WALL** recognizing individuals like you who have generously supported our mission.

As a 'Guardian', your name will be added to our Wall of Donors in **Ojochal**.



LEARN MORE about how to adopt a coral



Innoceana